

Mailing Address  
P.O Box 3403  
Galveston, Texas 77552  
Galveston  
409.621.1008

# The NEWS BRUSH

## INSIDE THIS ISSUE:

Strokes and Dabs	1
Special Thanks	2
January Featured Artist	3
March Featured Artist	4
Featured Artist Reception	5
Raffle Report	6
What is a Pixel?	7
Seen on Postoffice Street	8
Recent Workshops	9
Preview of Coming Attractions	11
Selling Your Work	12
Calendar	13

## BOARD OF DIRECTORS

Margo Donaldson Snider,  
President  
Pat Jakobi, Vice President  
Kristen Carlson, Treasurer  
Becky Webster, Secretary  
Vickie Sims, Membership  
Director  
Joyce Buffalo, Volunteer  
Director  
Steve Dudley, Juried Exhibition  
Show Director  
Leroy LeFlore, Member Show  
Director  
Billie Rinaldi, Featured Artist  
Coordinator  
Education Chair  
Marketing Director  
Fontaine Jacobs, Website  
Design  
Jackie Low, *NewsBrush* Editor  
Susan Steibberg, Social Media  
Director  
To contact a board member,  
please visit website for  
contact information.

## Strokes and Dabs Message from our President

*Margo Donaldson Snider*

I trust happy holidays were had by all! December has been exciting at GAL and I am sure 2026 will be as exciting as well.

I want to give a special thank you to all those who contributed to the Board's request for donations. Every contribution--big or small--will help GAL with the pending expenditures which include a new AC unit for 2117. Those who have contributed are listed on page 2. Please help me say a special thank you to each individual.

It was an exciting December ArtWalk as we raffled off the President's Award. It was won by Jordan Winzenried, Patient Safety Manager, St Luke's Health-Patient Medical Center, Pasadena TX. Jordan is displaying the painting above his dining table. This raffle netted GAL \$1030. Thanks to Fontaine for submitting her art work for the President's



Award. I might add she was the number one sales person of the raffle tickets.

Are you ready for the upcoming juried show? Monday the 26<sup>th</sup> is the day to bring in your art work. Steve in getting everything organized so we will have a smooth take-in.

Our next volunteer recognition will be scheduled soon. Since we use data for the calendar year, my goal is to have the recognition earlier than we did last year. This is just a friendly reminder to sign in for your hours when you complete volunteer work.

Again, Happy New Year to each of you. I look forward to seeing you soon.

*Margo*



The following individuals responded to the December appeal to members with generous donations. These contributions help the Galveston Art League continue its mission to connect art and artists and communities. Contributions are still accepted at the GAL website. [www.galvestonartleague.com](http://www.galvestonartleague.com)

*Margo Snider*

*Billy VandeBerghe*

*Becky Jolin*

*Margaret Canavan*

*Fontaine Jacobs*

*David Rassin*

*Pat Jakobi*

*Mardi Mitchell*

*Karen Stopnicki*

*Joyce Patterson*

*Jackie Liddell*

*Olga Chumakova*

*Dianne Owen*

*Jack Marshall*

*Michelle & Victor Sierpina*

*Leroy LeFlore*

*Becky Webster*

*Steve Dudley*

*Jackie Low*

*Vickie Sims*

*Jorge Fajardo*

*David Rives*

*Linda Susman*

*Julie Chapa*

*Kristen Carlson*

*Marsha Krohn*

*Susan Steinberg*

*Richard Scruggs*

*Steve Jones*

*Joyce Buffalo*



# JANUARY FEATURED ARTIST

## FONTAINE JACOBS

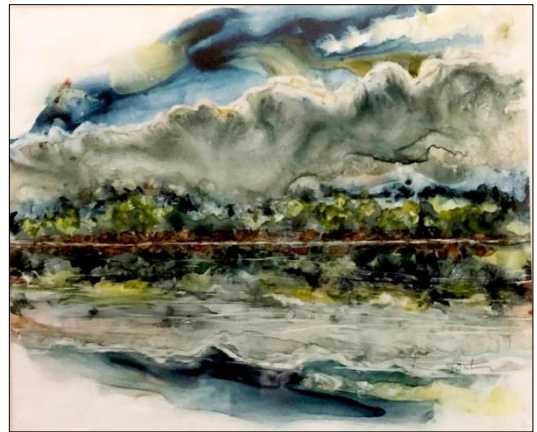
Fontaine Jacobs is a self-taught artist. Her work has been shown in galleries and won awards for both commercial and fine art throughout the United States. Her most famous commission was of Octavia Spencer from *The Help*. She was honored to present the painting and meet the actor at a cancer fundraiser in Memphis, Tennessee.

Fontaine is a signature member of the National Society of Artists and the Watercolor Art Society of Houston. She paints portraits, landscapes, animals, and abstracts. She frequently strives to merge impressionism with realism to capture an image. For some works, she chooses to go completely abstract.

Visit <http://www.fontainefineart.com> to see additional works or request a commission.



Rocky Riverside



Look for the Silver Lining



Let it Snow



# MARCH FEATURED ARTIST

## KEN SMITH

Ken Smith is a fine art photographer whose work invites viewers to slow down and truly see the natural world. A retired Senior Vice President and engineer for an Energy Company and Air Force Reserve Lieutenant Colonel, Ken spent decades traveling the globe with a camera always close at hand.

About ten years ago, he turned his lifelong passion for photography into a full-time creative pursuit, approaching it with the same curiosity and precision that defined his engineering career. Today, Ken focuses on nature at both macro and micro levels, capturing birds, flora, and quiet moments that often go unnoticed.

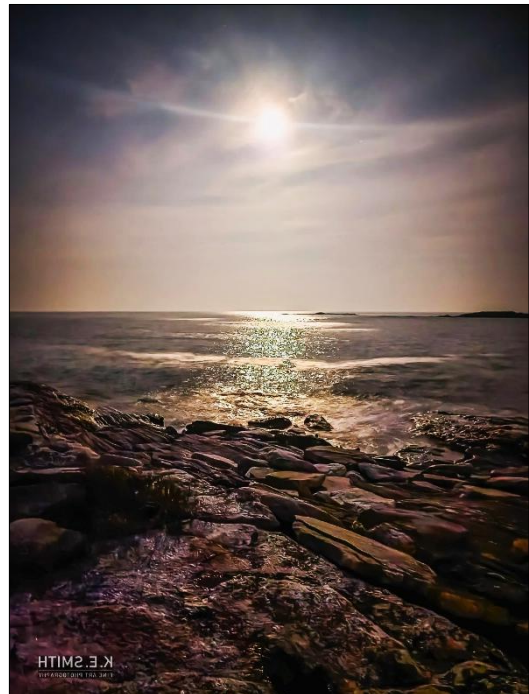
Based in Galveston during the winter and along the rugged Maine coast in summer, he believes in conceiving a photograph, not just taking one, creating images with soul, emotion, and a sense of discovery. Ken is honored to be the featured artist with the Galveston Art League this March.



The Sentinels



Flame in Bloom



Whisper of the Moon

## Featured Artist Reception

A reception for December Featured Artist Olga Chumakova was held at the Art League Gallery on Friday, December 5. A highlight of Olga's reception was her presentation of a portrait she painted of Mary Ann Ezell, her English teacher and a close friend.





Excitement was high and ticket sales were brisk at the December ArtWalk which closed with the drawing of a special raffle prize. The President's Award-winning watercolor painting *Brass Section* by GAL member Fontaine Jacobs was the prize for the fundraising raffle.



The lucky winner was Jordan Winzenried of Pasadena, TX. Ticket sales netted \$1030 for GAL.

Photos by Becky Webster  
and Steve Dudley



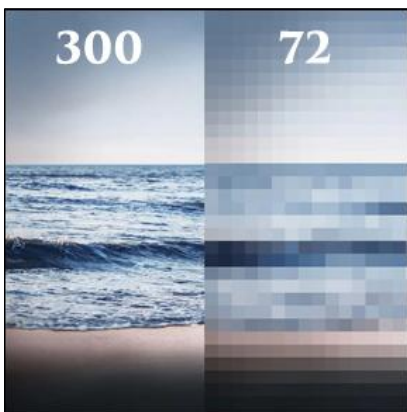
# WHAT IS A PIXEL AND WHY DOES IT MATTER?

Pat Jakobi

The Art League often asks artists to submit images either for posting on our website or to be printed on a flyer or in a publication. The specifications for those images usually include a minimum pixel size, e.g., “at least at 72 pixels” or at “300 pixels or larger.” The word *pixel* is a shortened version of “picture element.” It refers to a tiny square or dot that represents a single point of color. It does not have a fixed size, but it is always the smallest unit of color in an image.

Pixels are usually designated as DPI or PPI, signifying dots or pixels per inch. The images you see on telephone, on your smartphone, or in a magazine are all made up of a combined set of pixels.

An image with, say, 1080 vertical lines of pixels and 720 horizontal lines of pixels is referred to as having a resolution of 1080 x 720. A 300 pixel image printed with that resolution would be 3.6 x 2.4 inches. A 72 pixel image of that resolution would be printed at 15 x 10 inches. Both would have the same number of squares/dots spread out over the image. If the DPI/PPI for an image is too low (which it would be in that 72 pixel image), we say that the image is “pixelated,” meaning that the pixel density is insufficient, causing pixels to become more noticeable and edges and lines to appear jagged.



The DPI needed for an optimally sized image depends on how that image will be displayed. An image that will be printed in *Galveston Monthly* calls for a DPI of 300. If the image will be limited to electronic screens, then you can go as low as 72 DPI/PPI (but you don’t have to reduce a 300 DPI/PPI to 72 just because it will be used electronically). An ink jet copy of an oil or watercolor painting (often called a *giclee*) can range from 300 to over a 1000 DPI/PPI.

You don’t have to figure all this out yourself. Almost any entity asking you to send an image will specify

what size they want (in inches) and what DPI/PPI they need. This is relatively easy to calculate with a computer graphics program (such as Photoshop or Canva), but more difficult on a smartphone, especially since Apple and Android phones differ in how they set image/pixel sizes. Learning how to manage the size of your images can be important, however, especially if you ever want a hard copy of an image for framing or are asked to submit an image for publication.

# And To Think That I Saw It On Postoffice Street

The GAL front windows on Postoffice Street change each month to reflect the characteristics of that month. Design and creation are courtesy of Stephanie Danner with her collaborator Jessie Meza.



October 2025



November 2025

**The more I think it over, the more I  
feel that there is nothing more  
truly artistic than to love people.**

**Vincent Van Gogh**



## LIVE ~ LEARN ~ CREATE

Attend a Galveston Art League workshop.  
Check the website for upcoming events and details

Fontaine Jacobs held the “Go with Flow on Yupo” workshop at the gallery on October 11.



Photos by Becky Webster

# Taiguruma Workshop

## Motoyuki Noguchi

### November 17-20, 2025



Photos by  
Billie Rinaldi



## Preview of Coming Attractions

### 3D Art with Diana Clark

Sat., January 10

10:00 AM – Noon

\$50



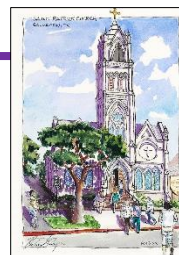
### Urban Sketching - Pencil Pen, Paint!

with Richard Scruggs

Sat. & Sun., March 21-22

9:00 am – 4:00 pm

\$150



### Create a Painterly Fused Glass Bowl with Barb Mueller

Sat., March 28

11:00 am – 3:00 pm

\$95



Workshops Location  
Galveston Art League Gallery  
2117 Postoffice  
Galveston, TX 77591

Register online at

[www.galvestonartleague.com/events/categories/workshops](http://www.galvestonartleague.com/events/categories/workshops)

Check this site for additional information, updates, and additional workshop offerings.

**Watch for information on the upcoming  
February Juried Show.**



## YOUR ARTWORK CAN BE SOLD THROUGH THE GALLERY AND THE WEB!

Fontaine Jacobs

With our newly designed website you can showcase your work and sell it online. Those who send work to be posted on the web can direct potential clients to [galvestonartleague.com](http://galvestonartleague.com) each month for a possible purchase. It worked for me and it can work for you. I sold *Blue Face Iguana* for \$1000, you guessed it, right off the website.

The web is responsive so it will work on any platform (desktop, phone, iPad, PC, and Mac). It will also be controlled by a database, thus reducing errors. This gives the site better rankings on Google and allow us to have a much more sophisticated shopping cart for the purchase of art, workshops, and ticket sales.

### BETTER IMAGES TO SHOWCASE YOUR WORK

Clickable images are much larger than before and other examples of your work are featured on the site. This is the perfect site for you to showcase your work. I advertise my work online through Facebook each month to increase my chances of sales and you, too, can as well. Thanks to those of you who submit your images. Currently only about 30-50% do. I encourage more of you to do this as it will result in a better image of your work on the site.

### FILE NAMING NEEDS TO MATCH THE DATABASE

File naming is important. So that the database can properly translate your file names and match them to the images on Dropbox, you should rename your files with the following: First Name Last Name Title of Work.jpeg

That means:

No underscores

No punctuation such as periods or commas

No special characters such as ~ ! @ # \$ % ^ & \* ( ) ? > <

AND

You Must Use Initial Caps for the First Letter of Each Major Word. Using the same painting name or similar name may cause the wrong image to appear online. Be creative—**Use a different name for each painting.**

Email the image with its new title and actual size to [gallery2117@gmail.com](mailto:gallery2117@gmail.com) by midnight the day of changeover in a member show and by midnight the day after notifications go out for a juried show. Thank you all for helping the new and improved site run smoothly.

**IF YOU DON'T SEND YOUR IMAGES PEOPLE WILL NOT SEE YOUR WORK AND YOU WON'T SELL YOUR WORK ON THE WEB!! SEND YOUR IMAGES.**

# 2026 CALENDAR

<b>January 2026</b>	<b>Featured Artist: Fontaine Jacobs</b> 10 – ArtWalk 18 – Featured Artist reception 19–25 - ArtWeek 26 – Changeover for February Juried Show 30 – Juried Show Reception 6:00 – 7:30 pm
<b>February 2026</b>	<b>Juried Show</b> 6 – Mardi Gras begins 14 – ArtWalk 23 – Changeover for March member show
<b>March 2026</b>	<b>Featured Artist: Ken Smith</b> 14 – ArtWalk 21-22 – Urban Sketching workshop with Richard Scruggs 28 – Create a Fused Glass Bowl with Barb Mueller 30 – Changeover for April member show
<b>April 2026</b>	<b>Featured Artist: David Wheeler</b> 11 – ArtWalk 27 – Changeover for May member show
<b>May 2026</b>	<b>Featured Artist: Kim Abbott</b> 09 – ArtWalk 25 – Changeover for June Juried Show 29 – Juried Show Awards Reception, 6:00 = 7:30
<b>June 2026</b>	<b>Juried Show</b> 13 - ArtWalk 29 – changeover for July member show
<b>July 2026</b>	<b>Featured Artist: Susan Pinkerton</b> 11 – ArtWalk 27 – Changeover for August member show
<b>August 2026</b>	<b>Featured Artist: Dot Alford</b> 08 – ArtWalk 31 – Changeover for September member show
<b>September 2026</b>	<b>Featured Artist: Doug Booker</b> 12 – ArtWalk 28 – Changeover for October Juried Show
<b>October 2026</b>	<b>Juried Show</b> 02 – Juried Show Reception 6:00 – 7:30 pm 10 – ArtWalk 26 – Changeover for November member show
<b>November 2026</b>	<b>Featured Artist: Sara Nygard</b> 14 – ArtWalk 30 – Changeover for December member show
<b>December 2026</b>	<b>Featured Artist:</b> 12 – ArtWalk 28 – Changeover for January 2027 member show
Check out your MailChimp emails, visit <a href="http://GalvestonArtLeague.com">GalvestonArtLeague.com</a> , and read future issues of <i>The NewsBrush</i> for updates.	