

Mailing Address  
P.O Box 3403  
Galveston, Texas 77552  
Galveston  
409.621.1008

# The NEWSBRUSH

## INSIDE THIS ISSUE:

Strokes and Dabs	1
Readers' Choice	2
Save the Date	3
June Featured Artist	4
July Featured Artist	5
August Featured Artist	6
Spring Juried Show	7
Awards Reception	9
Fall Juried Show	12
Important Reminders	14
GAL Names in the News	15
Preview Parties	15
Plein Air Competition	16
Juneteenth Workshop	17
Grand Kids Juried Show	18
Summer Programs	19
Selling Your Work on Line	20
Calendar	21

## BOARD OF DIRECTORS

Margo Donaldson Snider,  
President  
Pat Jakobi, Vice President  
Aubrey Garcia, Secretary  
Kristen Carlson, Treasurer  
Nancy Graham, Membership  
Director  
Joyce Buffalo, Volunteer  
Director  
Nancy House, Juried Exhibition  
Show Director  
Leroy LeFlore, Member Show  
Director  
Billie Rinaldi, Featured Artist  
Coordinator  
Sally Knight, Education Co-Chair  
Janie O'Farrell, Education Co-  
Chair  
Jackie Liddell, City-Wide Youth  
Show Director  
Fontaine Jacobs, Website  
Design  
Jackie Low, NewsBrush Editor  
Becky Jolin, Social Media  
Manager  
To contact a board member,  
please visit website for  
contact information.

## Strokes and Dabs Message from our President

*Margo Donaldson Snider*



MARK YOUR  
CALENDAR---September  
10, 2023. This is the date  
of our annual gala, the  
major fundraiser for GAL.  
The gala will once again  
be held at the Garten  
Verein. The time is 1:00  
to 3:30 pm. The cost of  
an individual ticket is  
\$130 and there are  
additional opportunities to  
support the event. Stay  
tuned for more to come.

Congratulations to David  
Wheeler. As the June  
Featured Artist, David  
holds the record for the  
artist with the all-time  
high number of sales.  
David certainly did  
everything right---he  
invited friends to the  
show and worked  
diligently at ArtWalk.  
Congratulations, David.

Spring and summer are  
the times for children's  
programs at the gallery.  
Thanks to Jackie Liddell  
for another successful K  
- !2 Juried show in April.  
Each year Jackie  
coordinates with the  
Galveston schools to  
assure students have  
the opportunities to be  
judged with their peers  
and to display their work  
to the public.

Likewise, Sally Knight  
and Janie O'Farrell  
organized the children's  
art classes in June.  
Three individual  
programs were offered  
and, as I understand,  
Mardi Mitchell was  
instructor extraordinaire  
at the first session.

continued on next page

Strokes and Dabs continued from page 1

Can you believe the Fall Juried show is rapidly approaching? Registration is Monday, August 28. I challenge all of you to get your creative juices flowing and get busy on the piece that will be judged Best of Show!

Meanwhile, don't forget to nominate GAL for the Galveston Daily News 2023 Reader's choice. Go to [www.galvnews.com/readerschoice](http://www.galvnews.com/readerschoice) to get your vote counted.

I wish you a fun-filled summer and especially a cool one!

*Margo*

## **VOTE FOR THE GALVESTON ART LEAGUE**

### **Galveston County Daily News 2023 Readers' Choice Contest**

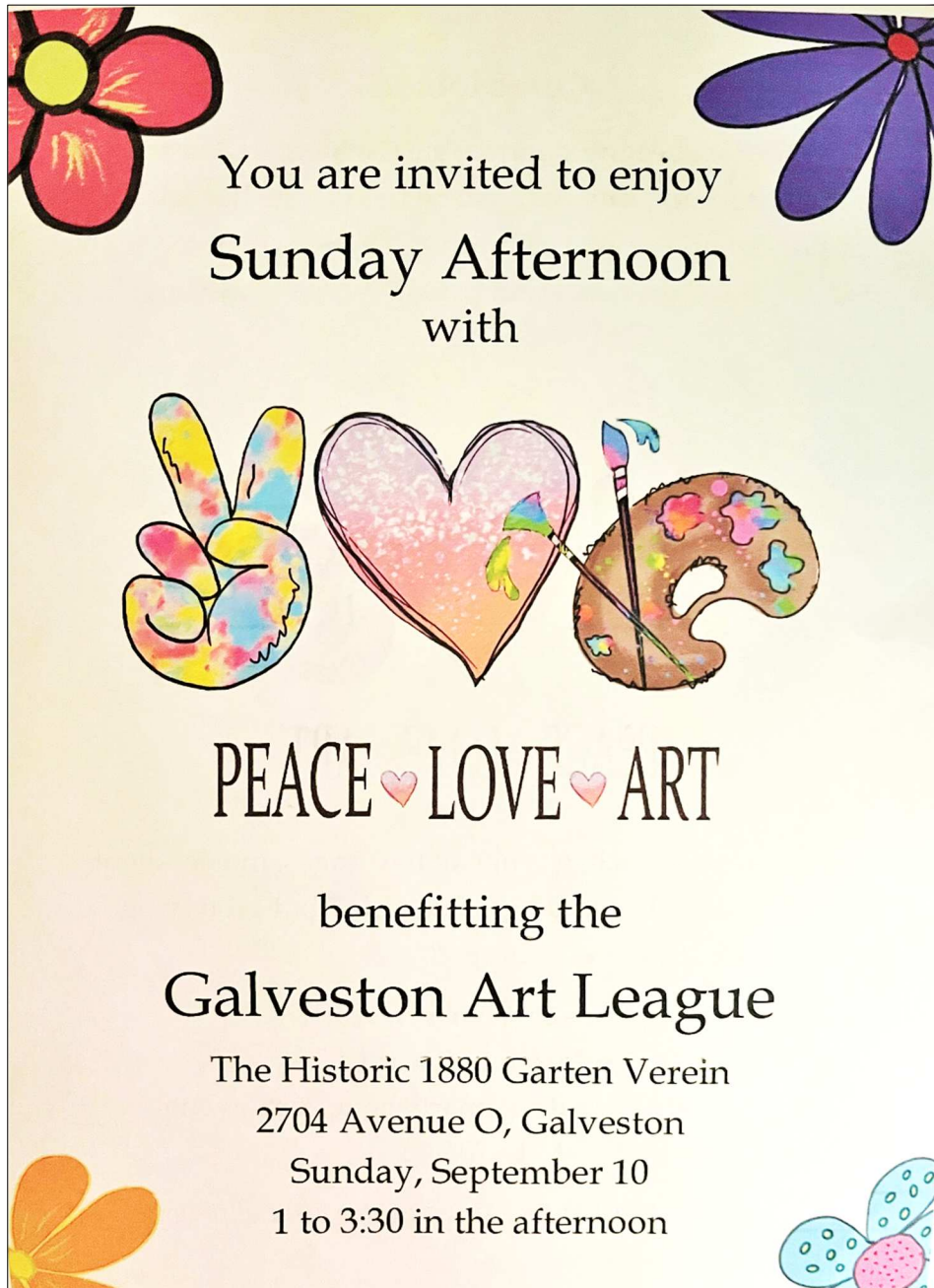
Each year, Daily News readers get to vote for their favorite local businesses in over 150 categories. GAL is listed under Retail/Best Art Gallery. We have won "best" in two of the last five years. We can win again with your help. The contest is divided into two parts:

Nomination: From June 15 to July 8, individuals can nominate their favorite in each category. The five with the most nominations go to the second round. You can vote as many times as you wish, but only once a day. The address to nominate is <https://www.galvnews.com/readerschoice/#/>.

Click on the box marked "Retail Shopping." You will need to register prior to your first vote, but will not be asked to register again.

Voting: From July 18th to Aug 23, you can vote for your favorite of five. Again, you can vote daily. Winners will be announced in September.

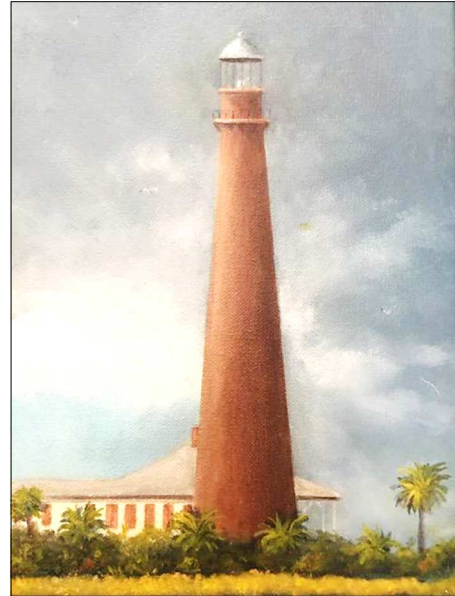
# Save the Date!



# JUNE FEATURED ARTIST

## David Wheeler

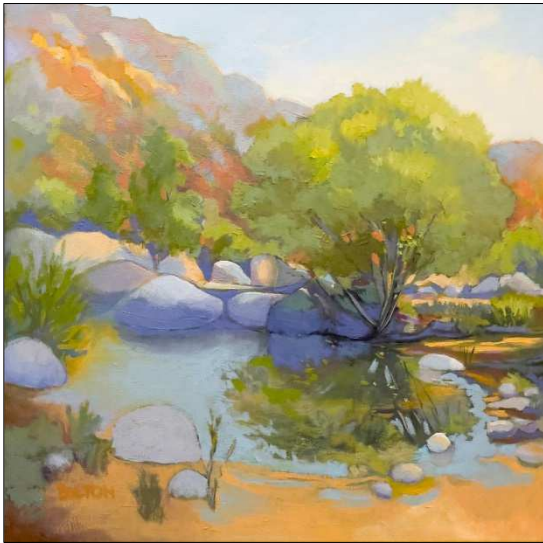
David Wheeler was born and raised in Texas City. He graduated from the University of Houston. David has been painting since childhood. His work has been shown in galleries in Houston and Kerrville as well as the Galveston Art League. He paints a wide variety of subjects and many landscapes are of places he has visited.





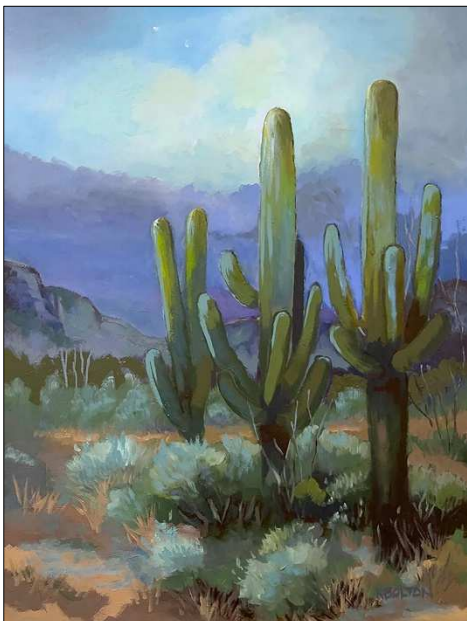
## JULY FEATURED ARTIST

### Kathy Bolton



A 4-year-old was sitting in the snow on top of a hill covered with oak trees and she looked over the city and watched twilight descend. There were the greys of the trees, the white of the various church steeples, the blue of the shadowed snow and the overall golden glow of the setting sun hitting the treetops. That was my first experience of landscape. When the trees, snow, setting sun, sound of the oak leaves rustling in the trees became a "Landscape" that was the source of not only visual beauty, but a sense of serenity and a connection to the natural world. A vast well of peace. Working on oil paintings of landscapes allows me to once again revisit that sense of peace that the 4-year-old felt sitting in the snow on top of that hill.

My paintings are an active pursuit of that feeling of peace and connection to the land.



Sabino Canyon Night



Yard Sale

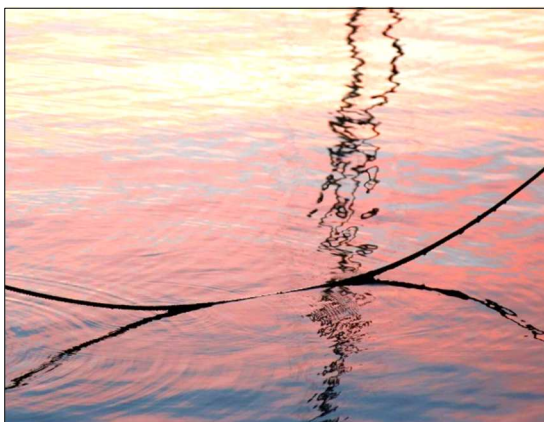
# AUGUST FEATURED ARTIST

## Matt Logmann

I reside in Nassau Bay. I have been a photographer for forty-eight years. From darkroom to digital, I have always enjoyed creating images that relate my ideas of form and message. The best definition of art I have read is it is just a communication. I try to make my communication as clear and precise as possible most of the time, while still arousing some imagination.

Although I am not formally trained, I am always interested in looking at images by others--masters, professionals and amateurs alike. I do this to learn and expand my range of understanding of technique. I believe any situation offers opportunity for a photo statement to be made but I love simplicities. I suppose that makes me a minimalist. I make my own prints for control.

I have been a member of the Galveston Art League for about five years and have won a number of awards in juried shows. In the last few years, I won two first places and best of show at the Texas City Art Festival, as well as being a featured artist there.



# SPRING JURIED SHOW

## Judge's Statement

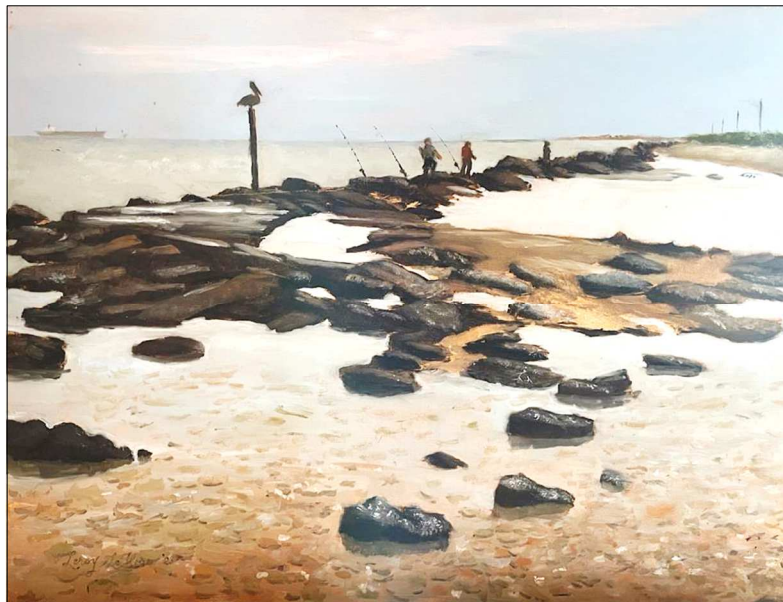
excerpts

**Lynn Chatman**

Thank you for the invitation to judge the Spring Juried Show. I was excited by the many examples of wonderful artwork displayed in the various categories. Choosing artwork for an art show is never easy, and this show was no exception.

So many pieces of artwork drew me back for second, third and fourth looks. With all the artistic talent to choose from, judging the Spring Show was a very pleasant, yet challenging, experience. Many thanks to all the artists who submitted work. Many pieces didn't receive awards simply because there was so much wonderful work to choose from. Someone else may very well have chosen differently.

I'm so sorry I can't be at the reception to meet all the artists in person. I can only encourage artists to keep striving to elevate your work to the next level, and to keep creating your artistic visions.



## Best of Show

Leroy LeFlore

*Rip Rap*

Canvas/Panel





### 3-Dimensional

#### First Place

Jerry L. Fryrear *Beauty and the Beast*

#### Second Place

Johnny Pace *Let's Dance*

#### Honorable Mention

Janet Bodin *Miss Mabell*

Jackie Low *The Mad Platter*



### Digital Art

#### First Place

Rebecah Thompson *A Beautiful Ride*

#### Second Place

Sharon Hendry *Elissa*

#### Honorable Mention

Susan Douglas Moody *Little Red and Friends*



### Photography

#### First Place

Matthew Allen Cole *Great Blue Heron*

#### Second Place

Pat Jakobi *After the Party*

#### Honorable Mention

Matt Logmann *Death Valley*

Sharon Jones *Surf Break, Oahu*



### Works on Canvas/Panel

#### First Place

Michael Hodnett *Child in Morning Tide*

#### Second Place

Jerry Bachman *Eye to Eye*

#### Honorable Mention

Kathy Bolton *Sabino Canyon Night 1*

Karen Calhoun *In? or Out?*





### Works on Paper

#### First Place

Fontaine Jacobs

*Flamboyance*

#### Second Place

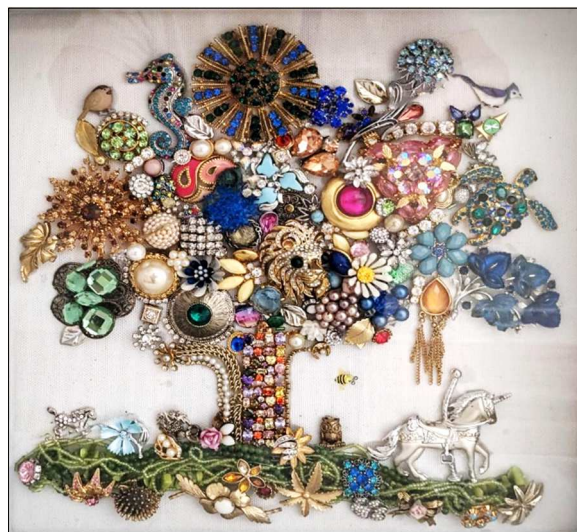
Mary Klug

*Manning the Grill*

#### Honorable Mention

Ruby Allen

*Oxidation*



### Mixed Media

#### First Place

Lee Johnson

*Tree of Life*

#### Second Place

Paula Freeman

*Stork Houses*

#### Honorable Mention

Aileen Harding

*Early Morning Solitude*

Jackie Liddell

*Golden Eye*

## SPRING JURIED SHOW AWARDS AND RECEPTION











## Fall 2023 Juried Show

The Fall 2023 Juried Show is scheduled from August 31 to September 24<sup>th</sup>. Artists drop off entries on Monday, August 28<sup>th</sup>, from 10 a.m. until 5 p.m. This is the fall exhibit; therefore, the McGiveny Award is a part of this show. The prestigious McGiveny Award is given yearly to an artist who submits a work on panel, canvas, or paper created in Galveston and depicting a scene in Galveston that is accepted into this juried exhibition. The selected work becomes a part of the permanent collection at the Rosenberg Library and the artist receives a monetary award of \$750 from the endowment established by Dr. Merlin Joseph McGivney through the Rosenberg Library.

Matt Manalo, a multidisciplinary artist, is the jurist. Mr. Manalo was born in Manila, Philippines, and resides in Houston. His environmentally conscious work incorporates raw materials and found objects to represent his own immigrant identity, displacement, and definition of “home.” Manalo is influenced by the physical and social structures from his life as well as the history he has experienced. Manalo is the founder of Filipinx Artists of Houston, a collective of visual, performing, literary, culinary, and multidisciplinary artists. He also runs an alternative art space: Alief Art House, a hub for creativity that highlights the cultural richness of the multiple communities within a unique Houston neighborhood.

### **Calendar for the Juried Show:**

Monday, August 28<sup>th</sup>, from 10 a.m. until 5 p.m. – deliver works to the Gallery

Tuesday, Wednesday, August 29 and 30 – judging and notification calls (only artists whose work has NOT been accepted or those receiving awards will be notified by phone, if you do not get a call, assume your work was accepted).

Thursday, August 31<sup>st</sup> – email images of accepted artwork by midnight to [gallery2117@gmail.com](mailto:gallery2117@gmail.com).

Thursday, Friday, and Saturday from noon until 6 p.m. – pick up works not in show.

Saturday, September 2 from 6 to 7:30 p.m. – Artist’s Reception and Awards.

Monday, Sept. 25 – changeover at the Gallery. Pick up your juried work and members can bring in artwork (up to 3 pieces) for October 2023 member show.

The prospectus and future updates are posted on the website:

<https://galvestonartleague.com/exhibits/juried-shows/>

## Triptychs and Diptychs Guidelines

There are size limits for entries into member and juried shows. For member shows, the horizontal and vertical lengths are measured. If this sum exceeds 70 inches, the entry is considered to occupy two spaces and is counted as two entries. For juried shows, the maximum size for an entry is 5'X5'.

Triptychs and diptychs are also subject to these limits. For member shows, the combined horizontal lengths are added to the single greatest vertical length and, if this sum exceeds 70", it counts as two entries. Likewise, for juried shows, the entry should not exceed 5'X5'. The spaces between the 3 pieces of a triptych or the 2 pieces of the diptych do not figure in these size requirements.

As an example, a triptych entry of three 20"X30" pieces, where 20" is the horizontal measure, would figure as 20"+20"+20"+30"=90" and would count as occupying two spaces. If, for a juried show, these measurements were to exceed 5'X5', the entry will not be accepted.

## Photographing Your Work for Shows

Images of work submitted for member and juried shows are posted on the website. Members are encouraged to submit their own photos of their work before or during changeover. **Complete information on submitting photographs of work is available on the website.** Following is a synopsis of the basics.

- Photographers can send in their original files. All other work should be shot before framing. See below for naming the file for proper identification.
- Shoot the image so that it is at least 1000 pixels on the longer side. If it is smaller than 1000 pixels, do not try to enlarge it or it will become pixelated and out of focus.
- If using a camera phone or a digital camera, the resulting jpg should be easy to email and suitable for web downsizing or optimization. **Send at actual size not small or medium**
- **Turn off the flash** when shooting works on canvas as the flash tends to highlight the threads of the canvas more than the image.
- **Fill the frame of the camera with the image as best you can.**
- Check the image in the camera after you take it. Look for reflections, dark spots, hair blown across the lens, your dog's nose in the corner, etc. If it looks off or blurry, reshoot it. Be sure to take a deep breath and hold still when you shoot the photo.
- Save your image as a .jpg (JPEG) and label as follows: First Name Last Name Name of Work. No underlines, colons, dashes, quotes. Example: Joe Smith Ship t Sea.jpeg

# IMPORTANT REMINDERS



## Send in Your Photos

Please be sure to send the photos of your member show artwork for the website to Fontaine no later than the day of changeover. The day before is even better. Minimum size requirement is at least 1000 pixels on the longest side.



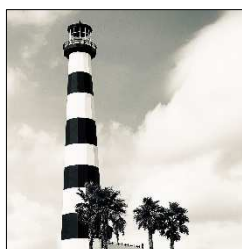
## Rollover Rules

You can roll over from a membership show to a juried show.  
You can roll over from a juried show to a membership show.  
You cannot do both; it's one or the other. You cannot roll over from a membership show to a membership show.



## GAL Names in the News

**Matt Logmann** had a solo show at the Evelyn Meader Library in Seabrook. The show consisted of thirty-six color and black and white photographs. The exhibition opened June 7<sup>th</sup> and runs to July 28<sup>th</sup>. This was the second time Matt has shown his works at the library.



**Eddie Filer Jr.** is offering a new online course "Portraits for Beginners." For information go to

<https://painttube.tv/products/eddie-filer-portraits-for-beginners>.

## PREVIEW PARTIES



Preview parties are scheduled for the Friday evening following changeover for each member show. Dates may be adjusted if ArtWalk is the first Saturday or if the weekend is the start of a major holiday event. Watch for announcements of changes.

July Featured Artist Kathy Bolton discusses her work at the preview party on June 30.

# Plein Air Competition

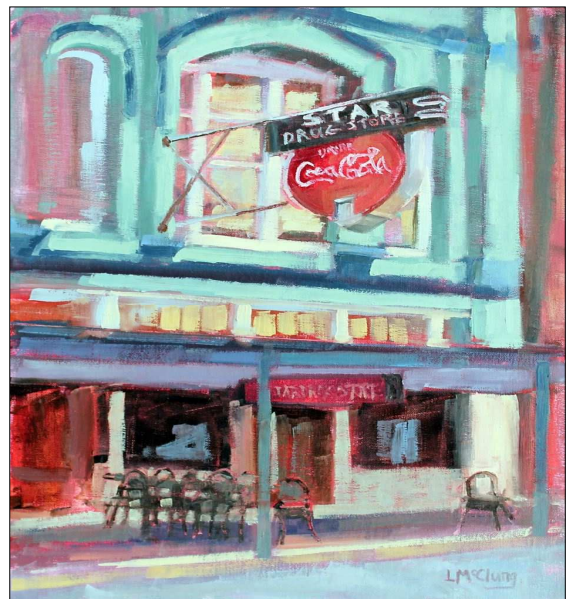
## Leroy LeFlore

Umbrellas were recommended for this year's Plein Air Southwest Competition and Show! This year's show was the third in four years (yes, one year's show was cancelled due to pandemic) put on by the [Outdoor Painters Society](#) in conjunction with the Galveston Historical Foundation and coinciding with their Annual Homes Tour.

The first the plein air show was in 2020 and proved to be such a hit that it has become an annual event. Participating artists, 40 in all, are juried in and must be members of the Outdoor Painter's Society. Artists paint as many pieces as they can in the week between the two homes tour weekends and submit them for display and judging. The competition draws artists from all over the country. I hosted artists from Seattle and San Francisco. If you've been missing these displays, then you've been missing the most skillful depictions of Galveston and its environs as painted by artists who have honed their craft to a high degree.

This year's competition results were displayed at Garten Verein in Kempner Park. The participating artists plein air painted on the grounds of Kempner Park while the exhibit was open to the public. Guests were invited to stroll amongst the artists and observe them while they painted.

Several Galveston Art League members who are also members of the Outdoor Painter's Society were juried in for this competition and prior competitions. They are **Kathy Hammond**, **Lisette McClung**, **Peggy Kingsbury**, and **Leroy LeFlore**. This year the Award of Distinction went to **Lisette McClung** for her 16' x 12' oil painting "The Star of 23<sup>rd</sup>." Congratulations Lisette!



## GAL Workshop Honors Juneteenth

The Juneteenth workshop was held on May 20. It was a multigenerational workshop of three generations. The participants painted ceramic plates using traditional colors and designs to celebrate freedom. They shared stories of early Galveston, how their families celebrated the holiday and their pride in the holiday.





## Grand Kids Art Juried Show

In conjunction with the Grand Kids Festival, GAL hosted the annual Kids Juried Art Show. **Jackie Liddell** coordinated the competition. **Sally Knight** judged the submissions. Entries were exhibited at the gallery and cash prizes and ribbons were awarded during a reception at the gallery on Saturday, April 29.



### Best in Show

Jesse Isaac

Ball High

### Grades 9 – 12

<b>First Place</b>	Victor Delgado	Ball High
<b>Second Place</b>	Elena Foulks	Ball High
<b>Honorable Mention</b>	Chloe Powell	Ball High
<b>Honorable Mention</b>	Liabeth Holcumb	Ball High

### Grades 6 – 8

<b>First Place</b>	Kelaiah White	Fanfare Lutheran Academy
<b>Second Place</b>	Briana Galo	Austin Middle School
<b>Honorable Mention</b>	Alexis Galindo	Austin Middle School
<b>Honorable Mention</b>	Jordynn Jimenez	Fanfare Lutheran Academy
<b>Honorable Mention</b>	Lianna Olvera	Austin Middle School

### Grades 4 -5

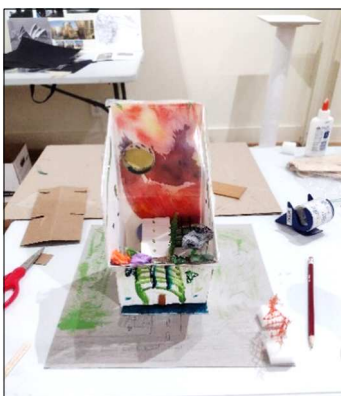
<b>First Place</b>	Heyde Benavides Melendez	L. A. Morgan Elementary
<b>Second Place</b>	Andy Mendez	Burnet Elementary
<b>Honorable Mention</b>	Tai-Vinh Bruno	L. A. Morgan Elementary
<b>Honorable Mention</b>	Demareon Weathersby	Parker Elementary

### Grades K – 3

<b>First Place</b>	Merisela Zelaya Medina	L. A. Morgan Elementary
<b>Second Place</b>	Jacqueline Guevara Benitez	L. A. Morgan Elementary
<b>Honorable Mention</b>	Josnay Duran	Parker Elementary
<b>Honorable Mention</b>	Daylin Pop	Burnet Elementary
<b>Honorable Mention</b>	Mason Medrano	Parker Elementary

## Children's Summer Art Program

Mardi Mitchel and Sally Knight started off the program with sessions focusing on Art in Architecture.



During the second week, Amy Slaughter and Janie O'Farrell led classes on Bird's the Word.

With the guidance of Sally Knight and Janie O'Farrell in the third week, students painted a variety of subjects in the style of GO VAN GOGH!



## IS YOUR ARTWORK GETTING NOTICED?

Fontaine Jacobs

With our newly designed website you can showcase your work and sell it online. Those who send work to be posted on the web can direct potential clients to [galvestonartleague.com](http://galvestonartleague.com) each month for a possible purchase. It worked for me, and it can work for you. I sold *Blue Face Iguana* for \$1000; you guessed it, right off the website. Since the web is responsive, it will work on any platform (desktop, phone, iPad, PC, and Mac). It will also be controlled by a database, thereby reducing errors. This will give the site better rankings on Google and allow us to have a much more sophisticated shopping cart for the purchase of art, workshops, and ticket sales.

### BETTER IMAGES TO SHOWCASE YOUR WORK

Clickable images are much larger than before, and other examples of your work from recent are featured on the site. It is a perfect site for you to showcase your work. I advertise the work I have online through Facebook each month to increase my chances of sales and you can, too. For those of you who submit your images (currently only about 30-50% do), we thank you. I encourage more to do this, as it will result in a better image of your work on the site.

### FILE NAMING NEEDS TO MATCH THE DATABASE

File naming is important. So that the database can properly translate your file names and match them to the images on Dropbox, you should rename your files with the following:

First Name Last Name Title of Work.jpeg

That means:

No underscores

No punctuation such as periods or commas

No special characters such as ~ ! @ # \$ % ^ & \* ( ) ? > <

AND

You Must Use Initial Caps for the First Letter of Each Major Word

Email the image with its new title and actual size to [gallery2117@gmail.com](mailto:gallery2117@gmail.com) by midnight the day of changeover in a member show and by midnight the day after notifications go out for a juried show. **Please note:** You no longer need to put the measurements and price on the files. Thank you all for helping the new and improved site run smoothly.



## 2023 CALENDAR

<b>July 2023</b>	<b>Featured Artist: Kathy Bolton</b> 15 – ArtWalk 31 – Changeover for August member show
<b>August 2023</b>	<b>Featured Artist:</b> 4 – Preview Party 26 – ArtWalk 28 – Changeover for Fall Juried Show
<b>September 2023</b>	<b>Fall Juried Show</b> 2 – Awards Reception <b>10 - GALA</b> 25 – Changeover for October member show 29 – Preview Party
<b>October 2023</b>	<b>Featured Artist</b> 7 – ArtWalk 30 – Changeover for November member show
<b>November 2023</b>	<b>Featured Artist</b> 3 – Preview Party 25 – ArtWalk 27 – Changeover for December member show
<b>December 2023</b>	<b>Special Show</b> 26 – Changeover for January 2024 member show 29 – Preview Party
<b>January 2024</b>	<b>Featured Artist</b> 6 – ArtWalk 29 - Changeover for Winter Juried Show
Check out your MailChimp emails, visit <a href="https://www.galvestonartleague.com">GalvestonArtLeague.com</a> , and read future issues of <i>The NewsBrush</i> for updates.	