

Mailing Address  
P.O Box 3403  
Galveston, Texas 77552  
Galveston  
409.621.1008

# The NEWSBRUSH

## INSIDE THIS ISSUE:

Strokes and Dabs	1
Don Henderson	2
October Featured Artist	3
Special Exhibition	4
Fall Juried Show	5
Awards Reception	7
Gala	9
Art in the Gardens	13
Preview Parties	14
Calendar	15

## BOARD OF DIRECTORS

Margo Donaldson Snider,  
President  
Pat Jakobi, Vice President  
Aubrey Garcia, Secretary  
Kristen Carlson, Treasurer  
Nancy Graham, Membership  
Director  
Joyce Buffalo, Volunteer  
Director  
Nancy House, Juried Exhibition  
Show Director  
Leroy LeFlore, Member Show  
Director  
Billie Rinaldi, Featured Artist  
Coordinator  
Sally Knight, Education Co-Chair  
Janie O'Farrell, Education Co-  
Chair  
Jackie Liddell, City-Wide Youth  
Show Director  
Fontaine Jacobs, Website  
Design  
Jackie Low, *NewsBrush* Editor  
Becky Jolin, Social Media  
Manager  
To contact a board member,  
please visit website for  
contact information.

## Strokes and Dabs Message from our President

*Margo Donaldson Snider*

A GOOD TIME WAS HAD BY ALL! Our annual gala was great fun. So sorry if you were not able to join us. As usual, the committee put in many hours, starting with Rebecah Thompson designing the invitation which provided the artwork for all the printed material. Rebecah's creative design skills were quite evident. Thanks to Sally Knight and Janie O'Farrell for chairing the committee. And thanks to all of you who donated to the silent auction. There was a good variety of items which provided something for all.

Again this year, Jackie Low organized and coordinated GAL's participation in The Art In the Garden Event at Moody Gardens. The project's focus is children with special needs. Jackie has managed this project for several years and as always done a great job. Thanks to Jackie and her helpers.

As most of you know Jerry Bachman has been ill and recently moved to an assisted living facility. He is no longer painting. At the last Board of Directors meeting, we agreed to do a fund raiser for him during the month of December.

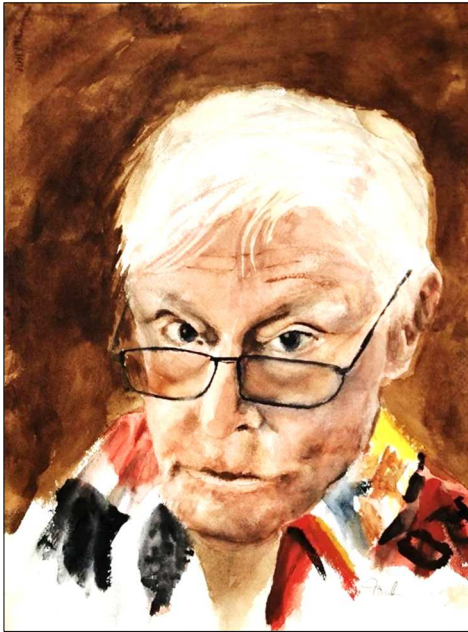


We will be showcasing and selling his art during the month. Plans are far from complete at this time, so details will be shared via MailChimp when they are finalized. If you do not have one of Jerry's works in your collection, December will be a good time to select one.

Do you know someone whose artistic ability includes jewelry making? There is one-half of a jewelry case available for rent. Please have that individual contact me or provide me with the information and I would be happy to discuss the availability with them.

It is with a great deal of sadness that I note the passing of Don Henderson. Don was a great GAL member, contributing in so many ways. It was always a delight to see his smiling face come through the gallery door. My heart goes out to Don's family. Please be sure to see more information about Don in this *NewBrush*.

*Margo*



*portrait by Fontaine Jacobs*



Pelicans



Tanker

## DON HENDERSON

We are sad to announce that Don Henderson, DDS, a long-time member of the Galveston Art League passed away on Saturday, September 9 at age 87. Don was born in Burnet, Texas, graduated from Burnet High School, attended southwest Texas State University and the University of Texas Dental School. After graduation from dental school, Don served in the US Air Force as a captain and remained in the Air Reserve until 1972.

In 1957, Don Henderson and his new bride, Louise, honeymooned on Galveston Island. They fell in love with the island and made Galveston their permanent residence in 1962 following Don's graduation from dental school. Don practiced dentistry in Galveston for 38 years before trying his hand at painting; and in 2005, he completed his first painting at the age of 69. Don's portfolio of paintings reflects the ambiance, beauty, and charm of Galveston and renderings of snippets of life on the island.

Don and Louise raised their three children on the island. Don not only painted, but he was an avid runner and won many races; you could see Don running on the seawall on most days.

Don's family credits "the Galveston Art League for providing a community for Don but also for fostering his development as an artist." In lieu of flowers, donations may be made in Don's memory to The Galveston Art League 2117A, Postoffice Street, Galveston, Texas 77550.



Sunrise on Beach

# OCTOBER FEATURED ARTIST

## ARIANE EDMUNDSON

Ariane Marie Edmundson has known since the age of six that she wanted to be an artist. Her family lived all over the world—Lebanon, Ethiopia, Philippines, Europe, and the U.S.—and her mother often took the kids to famous museums wherever they lived. Ariane loved being in the museums, surrounded by art and beauty, reading the stories of the artworks. Today she is still enthralled by this visual language. Her work has, over time, transitioned from Realism to Impressionism to Abstract Expressionism. She has recently focused on painting flowers. In her series, “Flowers That Say It All,” she tries to express the beauty and joy surrounding us.

She still travels around the world, living in Texas, Germany, Belize, and Italy throughout the year. Since returning to Texas, she has focused on mixed media, including adding collage and ink to watercolor paintings. She finds that the older she gets, the more diverse her work becomes.



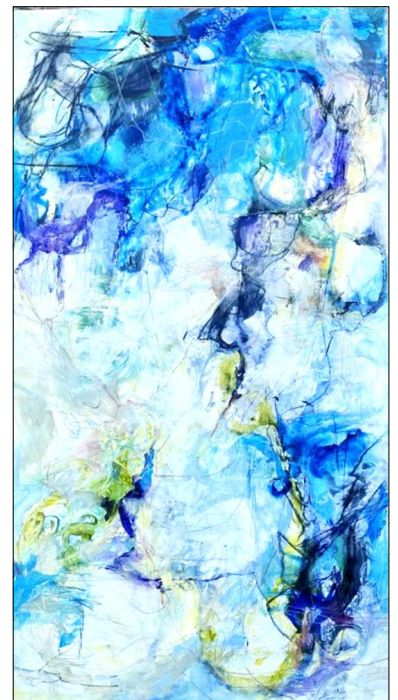
Hot and Dry



Inbetween Everything



Rose-colored Forest



Meanderings

# Coming Soon

## SPECIAL SHOW and RECEPTION

### Featuring the works of

## JERRY BACHMAN

A collection of works by long-time GAL member Jerry Bachman will be offered for sale at the gallery during the month of December. Watch for announcement of a reception in his honor.



Eye to Eye



Feline Follies

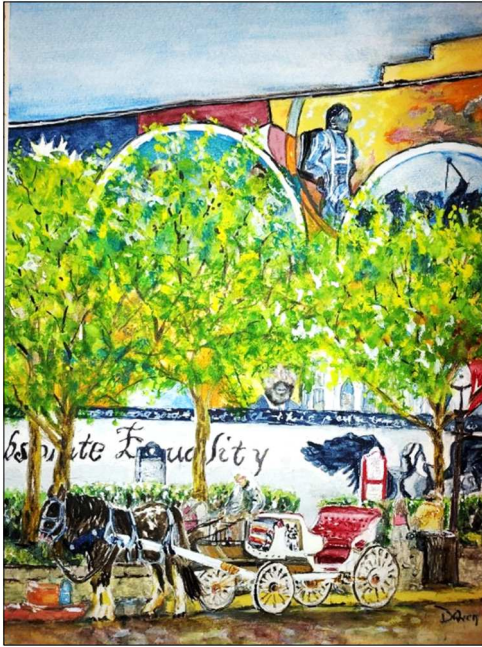


Red Bird Kiss



Cotton Field

# FALL JURIED SHOW



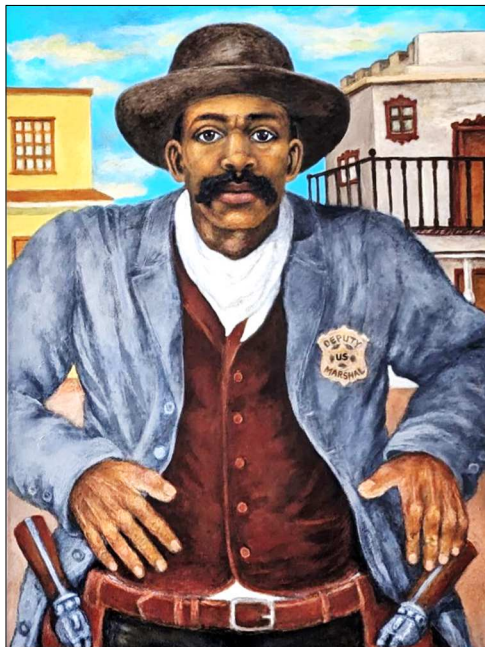
## McGivney Award

**Dianne Owen**  
**“Carriage and Courage”**  
 watercolor on paper

## Judge's Statement

In making my selections, I considered not only technical skill but also the emotional impact and the ability of the artwork to provoke thought and conversation. It was a difficult task, as there were so many outstanding entries. The artists showcased have demonstrated exceptional creativity and skill in their works, pushing the boundaries of traditional art forms and challenging our perceptions with how we see the world and how we yearn to see it. Each piece invites us to explore new dimensions of beauty, emotion, and thought.

Matt Manalo



## Best of Show

**Sharon A. Pittman**  
**“Bass Reeves”**  
 acrylic on canvas/panel



### 3-Dimensional

#### First Place

Richard Williams

*Melody*

#### Second Place

Judy Foster

*Gold-Black/White*



### Digital Art

#### First Place

Susan Douglass Moody *Paradise*

#### Second Place

Sharon Jones

*Behind the Mask*



### Photography

#### First Place

Steve Jones

*The Tunnel - MFA*

#### Second Place

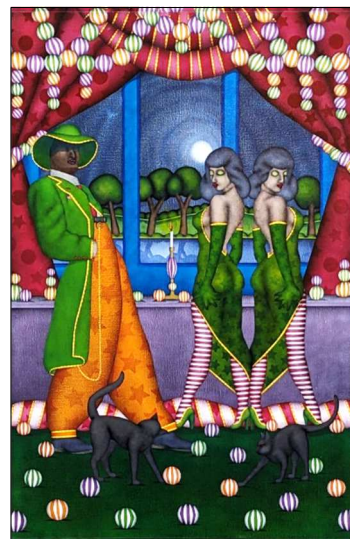
Julie Chapa

*Sticks*

#### Honorable Mention

Dorothy "Dot" Alford

*New Day*



### Works on Canvas/Panel

#### First Place

Jerry Bachman

*Sharks Pond Dance*

#### Second Place

Sara Nygard

*Just Another Day at the Office*

#### Honorable Mention

Karen Whitman

*Dylan & Jack*

Margaret O'Brien-Nelson *Railroad Bridge at Virginia Point*



### Works on Paper

#### First Place

Fontaine Jacobs *Iguazu Falls*

#### Second Place

Oris Virgil *Hanging Out*

#### Honorable Mention

Gay Paratore *Acadia Sunset,  
Schoodic Point*

Kassandra DeVerwteuil *Lovely Luna*



### Mixed Media

#### First Place

Jackie Liddell *Seaside Sushi Lunch*

#### Second Place

Ariane Edmundson *Interwoven*

#### Honorable Mention

Lee Johnson *Spring*  
Dana McCormick *Sea Life*

## FALL JURIED SHOW AWARDS AND RECEPTION







were in abundance at the 2023 GAL Annual Gala on Sunday, September 10. As in recent years, the 1880 Garten Verein was the perfect setting for GAL members and guests to enjoy beverages, food, music and shopping the silent auction. A raffle and a live auction provided additional excitement. Special thanks to Troy Knight, Matt Logmann, and Billie Rinaldi for photographing the festivities.

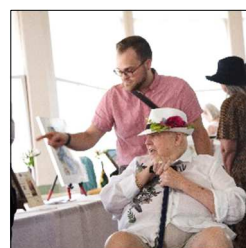


### Gala Committee Members

Margo Donaldson Snider – President  
 Sally Knight – Co-chair  
 Janie O'Farrell – Co-chair  
 Joyce Buffalo  
 Kristen Carlson  
 Paula Freeman  
 Nancy House  
 Pat Jakobi  
 Lisette McClung

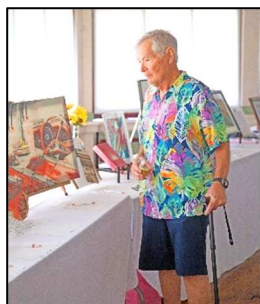
### Table Sponsors

Leon Bromberg Charitable Trust  
 Mr. and Mrs. Harris Kempner, Jr.  
 Bill and Jackie Low  
 Mainland Tool  
 Right at Home



## Floral Arrangements

Galveston Flower Company  
courtesy of Larry Janzen.



## Silent Auction and Raffle Donors

Artist Boat  
Fairy Tale Photography Studio  
Galveston Art League  
Galveston Island Nature Tourism Council  
Gracie's/Jenette Barrett  
Hey Mikey's  
Kendra Scott Jewelry  
Kimmy's Boutique  
La T da Spas  
Health Matters  
Old Galveston Trading Company  
Segway Galveston  
Shrimp N Stuff  
Texas Art Supply  
The Naked Mermaid  
Willow Deene Tours  
Jerry Bachman  
Kristen Carlson  
Kyungsoon Chung  
Lisa Dill  
Margo Donaldson Snider  
Kathy Hammond  
Nancy House  
Fontaine Jacobs  
Pat Jakobi  
Sally & Troy Knight  
Marsha Krohn  
Matt Logmann  
Jackie Low  
Lisette McClung  
Mardi J. Mitchell  
Susan Moody  
Peggy Naughton  
Nancy Newton  
Gay Paratore  
Joyce Patterson  
Molly Slack  
Jerolyn Travers  
Sharon Worley

## Music

Mana Band

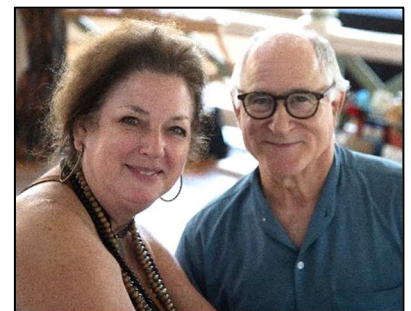
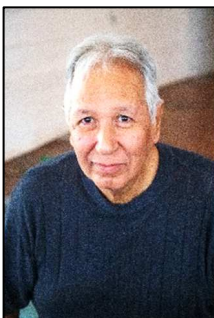
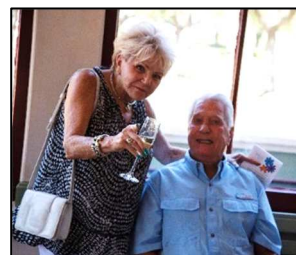
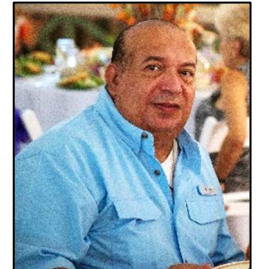
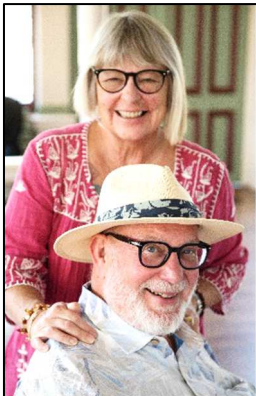
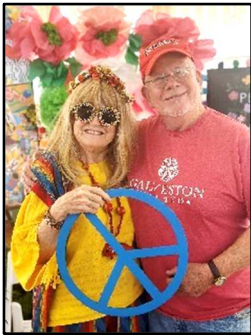


## Culinary Creations

Benno's Cajun Seafood

## Wine

Total Wine & More



## GAL at Moody Gardens

Moody Gardens hosted the annual “Art in the Gardens” for special education students from area school districts on September 21st. The field trip included a visit to either the Aquarium or the Rain Forest Pyramid as well as “make it and take it” creative art experiences provided by several groups. The GAL booth was staffed by volunteers Jackie and Mark Liddell, Lee Runion, Fontaine Jacobs, and Bill and Jackie Low. They assisted the students in assembling and decorating art foam turtles. GAL member Joan Finn and her group of National Honor Society students from LaMarque High School assisted wherever they were needed.



Reverend Dan Gilliam and Paige Gilliam donated the supplies for the GAL project and cut out the turtles and shells and prepared them for hanging.



A large friendly shark stopped by the GAL booth.



## PREVIEW PARTIES

Preview parties are scheduled for the Friday evening following changeover for each member show. Dates may be adjusted if ArtWalk is the first Saturday or if the weekend is the start of a major holiday event. Watch for announcements of changes.



July Featured Artist  
Kathy Bolton



August Featured Artist  
Matt Logmann



October Featured Artist  
Ariane Edmundson

## *Meanwhile. . .*



Becky O'Neal created the colorful design for the GAL sidewalk signboard.



October window by  
Janie and Drew  
O'Farrell

# 2023 CALENDAR

<b>October 2023</b>	<b>Featured Artist: Ariane Edmundson</b> 7 – ArtWalk 30 – Changeover for November member show
<b>November 2023</b>	<b>Featured Artist: Paula Freeman</b> 3 – Preview Party 25 – ArtWalk 27 – Changeover for December member show
<b>December 2023</b>	<b>Special Show featuring works of Jerry Bachman</b> 26 – Changeover for January 2024 member show 29 – Preview Party
<b>January 2024</b>	<b>Featured Artist: Richard Scruggs</b> 13 - ArtWalk 29 - Changeover for Winter Juried Show
<b>February 2024</b>	<b>Winter Juried Show</b> 3 – Juried Show Awards and Reception 26 – Changeover for March member show
<b>March 2024</b>	<b>Featured Artist: Susan Moody</b> 2 – Art Walk TBA Preview Party 25 – Changeover for April member show 29 – Preview Party
<b>April 2024</b>	<b>Featured Artist</b> 27 - ArtWalk 29 – Changeover for Spring juried show
<b>May 2024</b>	<b>Spring Juried Show</b> 4 – Juried Show Awards and Reception 27 – Changeover for June member show TBA - Preview Party
Check out your MailChimp emails, visit <a href="https://www.galvestonartleague.com">GalvestonArtLeague.com</a> , and read future issues of <i>The NewsBrush</i> for updates.	